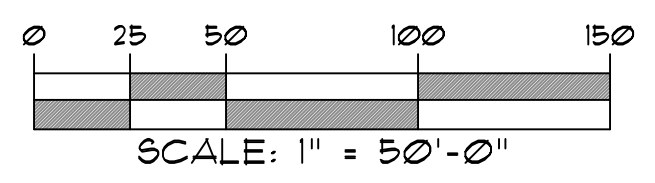


PLANT LEGEND PC EXHIBIT E

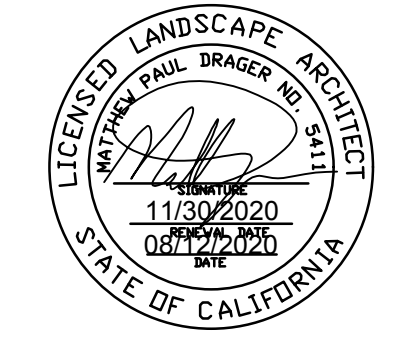
SYM.	BOTANICAL NAME	COMMON NAME	QTY	SIZE	WATER USAGE	HEIGHT	WIDTH
PRIMARY TREES							
	<i>Acer rubrum</i> 'Red Sunset'	Red Maple	26	1" Cal.	MED	60'x45'	
	<i>Fraxinus Americana</i> 'Autumn Purple'	American Ash	35	1" Cal.	MED	80'x80'	
	<i>Pyrus calleryana</i> 'Aristocrat'	Gallery Pear	22	1" Cal.	MED	50'x35'	
	<i>Platanus acerifolia</i> 'Bloodgood'	Bloodgood London Plane Tree	29	1" Cal.	MED	100'x80'	
	<i>Quercus shumardii</i>	Shumard Oak	28	1" Cal.	MED	60'x60'	
	<i>Quercus suber</i>	Cork Oak	0	1" Cal.	LOW	70'x70'	
	<i>Quercus virginiana</i>	Southern Live Oak	8	1" Cal.	MED	80'x100'	
	<i>Ulmus parvifolia</i> 'True Green'	Chinese Elm	31	1" Cal.	MED	50'x40'	
	<i>Zelkova serrata</i> 'Village Green'	Japanese Zelkova	32	1" Cal.	MED	60'x50'	
ACCENT TREES							
	<i>Arbutus marina</i>	Marina Strawberry Tree	24	1" Cal.	MED	50'x40'	
	<i>Cercis occidentalis</i>	Western Redbud	101	1" Cal.	LOW	20'x20'	
	<i>Fraxinus angustifolia</i> 'Raywood'	Raywood Ash	35	1" Cal.	MED	50'x30'	
	<i>Lagerstroemia indica</i> x <i>fauriei</i> 'Tonto'	Tonto Grape Myrtle	80	2" Cal.	LOW	25'x25'	
	<i>Magnolia stellata</i>	Star Magnolia	53	1" Cal.	MED	10'x12'	
GRASSES/VINES							
	<i>Aristolochia californica</i>	California Pipevine	54	5 Gal.	LOW	20'x1'	
	<i>Clematis ligusticifolia</i>	Old-Man's Beard	33	5 Gal.	MED	30'x1'	
	<i>Euonymus fortunei</i> <i>radicans</i>	Wintercreeper	124	5 Gal.	MED	15'x2'	
	<i>Ficus pumila</i>	Climbing Fig	62	5 Gal.	MED	15'x2'	
	<i>Deschampsia caespitosa</i>	Tussock Grass	162	5 Gal.	LOW	3'x2'	
	<i>Festuca californica</i>	California Fescue	144	5 Gal.	MED	1'x2'	
	<i>Muhlenbergia capillaris</i> 'Regal Mist'	Muhly Grass	162	5 Gal.	LOW	4'x3'	
SHRUBS							
	<i>Arbutus unedo</i> 'Compacta'	Strawberry Tree	186	5 Gal.	LOW	10'x10'	
	<i>Arctostaphylos densiflora</i> 'Howard McMillin'	Vine Hill manzanita	118	5 Gal.	MED	7'x10'	
	<i>Carpenteria californica</i>	Bush Anemone	182	5 Gal.	LOW	10'x10'	
	<i>Cistus ladanifer</i>	Gum Rockrose	163	5 Gal.	MED	5'x3'	
	<i>Dodonaea viscosa</i> 'Purpurea'	Purple Hopseed Bush	286	5 Gal.	LOW	15'x15'	
	<i>Mahonia aquifolium</i>	Oregon Grape	179	5 Gal.	MED	6'x5'	
	<i>Rhamnus californica</i> 'Eve Case'	Coffeeberry	223	5 Gal.	LOW	15'x15'	
	<i>Ribes viburnifolium</i>	Catlina Currant	281	5 Gal.	LOW	3'x8'	
GROUND COVERS							
	<i>Arctostaphylos</i> 'Emerald Carpet'	Emerald Carpet Manzanita	381	1 Gal.	MED	5±	
	<i>Arctostaphylos</i> 'Green Supreme'	Green Supreme Manzanita	84	1 Gal.	MED	4'	
	<i>Cistus salvifolius</i>	Salvia cistus	63	1 Gal.	LOW	2'	
	<i>Fragaria chiloensis</i>	Beach Strawberry	81	1 Gal.	MED	3'	
	<i>Hypericum calycinum</i>	Aaron's Beard	119	1 Gal.	MED	4'	
	<i>Mahonia repens</i>	Creeping Oregon Grape	121	1 Gal.	LOW	3'	
	<i>Myoporum parvifolium</i>	Creeping Myoporum	126	1 Gal.	LOW	3'	
	<i>Myrtus communis</i> 'Compacta'	Compact Myrtle	314	1 Gal.	LOW	4'	
	<i>Salvia sonomensis</i>	Creeping Sage	246	1 Gal.	LOW	3'	
MISCELLANEOUS							
	3/4" Decorative Bark Mulch to Match Master Development, 3" Depth in All Planting Areas (Typ)						
	Laminated 3/8" Redwood Bender Board or equal						

CONCEPTUAL GENERAL NOTES

- CONCEPTUAL LANDSCAPE PLAN IS SCHEMATIC IN NATURE. AT THE TIME OF LANDSCAPE CONSTRUCTION DRAWINGS ACTUAL LOCATIONS, QUANTITIES, SIZES, AND SPECIES SHALL BE DETERMINED AND WILL BE PER CITY CODES.
- ALL TREES USED WITHIN THIS PROJECT SHALL BE NURSERY GROWN OR SALVAGED FROM ON SITE. EXACT LOCATIONS AND QUANTITIES SHALL BE DETERMINED ON LANDSCAPE CONSTRUCTION DRAWINGS. ALL EXISTING TREES SHALL BE PROTECTED DURING CONSTRUCTION.
- ALL LANDSCAPE AREAS SHALL RECEIVE AN AUTOMATIC IRRIGATION SYSTEM.
- ALL PLANT MATERIAL SHALL BE INSTALLED PER CITY REQUIREMENTS. PLANT MATERIAL INSTALLED WITHIN SIGHT DISTANCE TRIANGLES SHALL BE OF A SPECIES THAT DOES NOT GROW TO A HEIGHT OF MORE THAN 30" AND SHALL BE MAINTAINED PER CITY REQUIREMENTS.
- ALL NON-TURF AREAS SHALL RECEIVE A 2" DEPTH OF DECOMPOSED GRANITE.
- THE RETENTION SHOWN ON THE PLANS IS CONCEPTUAL IN NATURE. REFER TO THE ENGINEERING PLANS FOR ACTUAL GRADING AND DRAINAGE CONFIGURATIONS.
- ALL EARTHWORK WILL BE DONE TO DRAIN AWAY FROM SIDEWALKS AND STRUCTURES.
- FINAL LOT CONFIGURATION MAY VARY AT THE TIME OF FINAL PLAT APPROVAL.
- ADDITIONAL PLANT MATERIAL MAY BE INTRODUCED AS DIFFERENT VARIETIES BECOME AVAILABLE THROUGH LOCAL NURSERIES AND IF THEY ARE CONSISTENT WITH THE OVERALL THEME OF THIS PROJECT.



Collaborative V
Design Studio Inc.
7116 East 1st Ave.,
Suite 103
Scottsdale, Arizona
85251
office: 480-347-0590
fax: 480-656-6012
MATT DRAGER
MATT@COLLABORATIVEV.COM



PRELIMINARY
NOT FOR
CONSTRUCTION

LANDSCAPE IMPROVEMENTS
Cyrene at Fiddymont Ranch
Roseville, California

Preliminary Landscape Plan

DESIGNED BY: PV/MD
DRAWN BY: MD
CHECKED BY: MD
DATE: August 12, 2020
REVISIONS:

Cyrene at Fiddymont Ranch
DRB Submittal

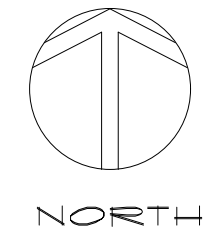
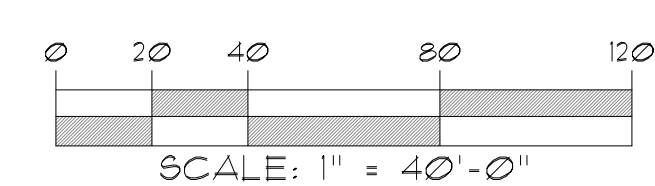
L1.1

PLANT LEGEND

SYM.	BOTANICAL NAME	COMMON NAME	QTY	SIZE	WATER USAGE	HEIGHT & WIDTH
PRIMARY TREES						
	<i>Acer rubrum</i> 'Red Sunset'	Red Maple	26	1" Cal.	MED	60'x45'
	<i>Fraxinus Americana</i> 'Autumn Purple'	American Ash	35	1" Cal.	MED	80'x20'
	<i>Pyrus calleryana</i> 'Aristocrat'	Callery Pear	22	1" Cal. 2" Cal.	MED	50'x35'
	<i>Platanus acerifolia</i> 'Bloodgood'	Bloodgood London Plane Tree	29	1" Cal.	MED	100'x20'
	<i>Quercus shumardii</i>	Shumard Oak	28	1" Cal.	MED	60'x60'
	<i>Quercus suber</i>	Cork Oak	0	1" Cal.	LOW	70'x70'
	<i>Quercus virginiana</i>	Southern Live Oak	8	1" Cal. 2" Cal.	MED	80'x100'
	<i>Ulmus parvifolia</i> 'Trus Green'	Chinese Elm	37	1" Cal.	MED	50'x40'
	<i>Zelkova serrata</i> 'Village Green'	Japanese Zelkova	32	1" Cal.	MED	60'x50'
ACCENT TREES						
	<i>Arbutus marina</i>	Marina Strawberry Tree	24	1" Cal.	MED	50'x40'
	<i>Cercis occidentalis</i>	Western Redbud	101	1" Cal.	LOW	20'x20'
	<i>Fraxinus angustifolia</i> 'Raywood'	Raywood Ash	35	1" Cal.	MED	50'x30'
	<i>Lagerstroemia indica</i> x <i>fauriei</i> 'Tonto'	Tonto Crape Myrtle	80	2" Cal.	LOW	25'x25'
	<i>Magnolia stellata</i>	Star Magnolia	53	1" Cal.	MED	10'x12'
GRASSES/VINES						
	<i>Aristolochia californica</i>	California Pipevine	54	5 Gal.	LOW	20'x1'
	<i>Clematis ligusticifolia</i>	Old-Man's Beard	33	5 Gal.	MED	30'x1'
	<i>Euonymus fortunei radicans</i>	Wintercreeper	124	5 Gal.	MED	15'x2'
	<i>Ficus pumila</i>	Climbing Fig	62	5 Gal.	MED	15'x2'
	<i>Deschampsia caespitosa</i>	Tussock Grass	162	5 Gal.	LOW	3'x2'
	<i>Festuca californica</i>	California Fescue	144	5 Gal.	MED	1'x2'
	<i>Muhlenbergia capillaris</i> 'Regal Mist'	Muhly Grass	162	5 Gal.	LOW	4'x3'
SHRUBS						
	<i>Arbutus unedo</i> 'Compacta'	Strawberry Tree	186	5 Gal.	LOW	10'x10'
	<i>Arctostaphylos densiflora</i> 'Howard McMinn'	Vine Hill manzanita	118	5 Gal.	MED	7'x10'
	<i>Carpenteria californica</i>	Bush Anemone	182	5 Gal.	LOW	10'x10'
	<i>Cistus ladanifer</i>	Gum Rockrose	163	5 Gal.	MED	5'x3'
	<i>Dodonaea viscosa</i> 'Purpurea'	Purple Hopseed Bush	286	5 Gal.	LOW	15'x15'
	<i>Mahonia aquifolium</i>	Oregon Grape	179	5 Gal.	MED	6'x5'
	<i>Rhamnus californica</i> 'Eye Case'	Coffesberry	223	5 Gal.	LOW	15'x15'
	<i>Ribes viburnifolium</i>	Catlina Currant	281	5 Gal.	LOW	3'x2'
GROUND COVERS						
	<i>Arctostaphylos</i> 'Emerald Carpet'	Emerald Carpet Manzanita	381	1 Gal.	MED	5'
	<i>Arctostaphylos</i> 'Green Supreme'	Green Supreme Manzanita	84	1 Gal.	MED	4'
	<i>Salvia cistus</i>	Salvia cistus	63	1 Gal.	LOW	2'
	<i>Fragaria chiloensis</i>	Beach Strawberry	81	1 Gal.	MED	3'
	<i>Hypericum calycinum</i>	Aaron's Beard	119	1 Gal.	MED	4'
	<i>Mahonia repens</i>	Creeping Oregon Grape	127	1 Gal.	LOW	3'
	<i>Myoporum parvifolium</i>	Creeping Myoporum	126	1 Gal.	LOW	3'
	<i>Myrtus communis</i> 'Compacta'	Compact Myrtle	314	1 Gal.	LOW	4'
	<i>Salvia sonomensis</i>	Creeping Sage	246	1 Gal.	LOW	3'
MISCELLANEOUS						
	3/4" Decorative Bark Mulch to Match Master Development, 3" Depth In All Planting Areas (Typ)					
	Laminated 3/8" Redwood Bender Board or equal					

CONCEPTUAL GENERAL NOTES

- CONCEPTUAL LANDSCAPE PLAN IS SCHEMATIC IN NATURE. AT THE TIME OF LANDSCAPE CONSTRUCTION DRAWINGS ACTUAL LOCATIONS, QUANTITIES, SIZES, AND SPECIES SHALL BE DETERMINED AND WILL BE PER CITY CODES.
- ALL TREES USED WITHIN THIS PROJECT SHALL BE NURSERY GROWN OR SALVAGED FROM ON SITE. EXACT LOCATIONS AND QUANTITIES SHALL BE DETERMINED ON LANDSCAPE CONSTRUCTION DRAWINGS. ALL EXISTING TREES SHALL BE PROTECTED DURING CONSTRUCTION.
- ALL LANDSCAPE AREAS SHALL RECEIVE AN AUTOMATIC IRRIGATION SYSTEM.
- ALL PLANT MATERIAL SHALL BE INSTALLED PER CITY REQUIREMENTS. PLANT MATERIAL INSTALLED WITHIN SIGHT DISTANCE TRIANGLES SHALL BE OF A SPECIES THAT DOES NOT GROW TO A HEIGHT OF MORE THAN 30' AND SHALL BE MAINTAINED PER CITY REQUIREMENTS.
- ALL NON-TURF AREAS SHALL RECEIVE A 2" DEPTH OF DECOMPOSED GRANITE.
- THE RETENTION SHOWN ON THE PLANS IS CONCEPTUAL IN NATURE. REFER TO THE ENGINEERING PLANS FOR ACTUAL GRADING AND DRAINAGE CONFIGURATIONS.
- ALL EARTHWORK WILL BE DONE TO DRAIN AWAY FROM SIDEWALKS AND STRUCTURES.
- FINAL LOT CONFIGURATION MAY VARY AT THE TIME OF FINAL PLAT APPROVAL.
- ADDITIONAL PLANT MATERIAL MAY BE INTRODUCED AS DIFFERENT VARIETIES BECOME AVAILABLE THROUGH LOCAL NURSERIES AND IF THEY ARE CONSISTENT WITH THE OVERALL THEME OF THIS PROJECT.



Collaborative V
Design Studio Inc.
7116 East 1st Ave.,
Suite 103
Scottsdale, Arizona
85251
office: 480-347-0590
fax: 480-656-6012
MATT DRAGER
MATTD@COLLABORATIVEV.COM



PRELIMINARY
NOT FOR
CONSTRUCTION

LANDSCAPE IMPROVEMENTS
Cyrene at Fiddymont Ranch
Roseville, California

Preliminary Landscape Plan

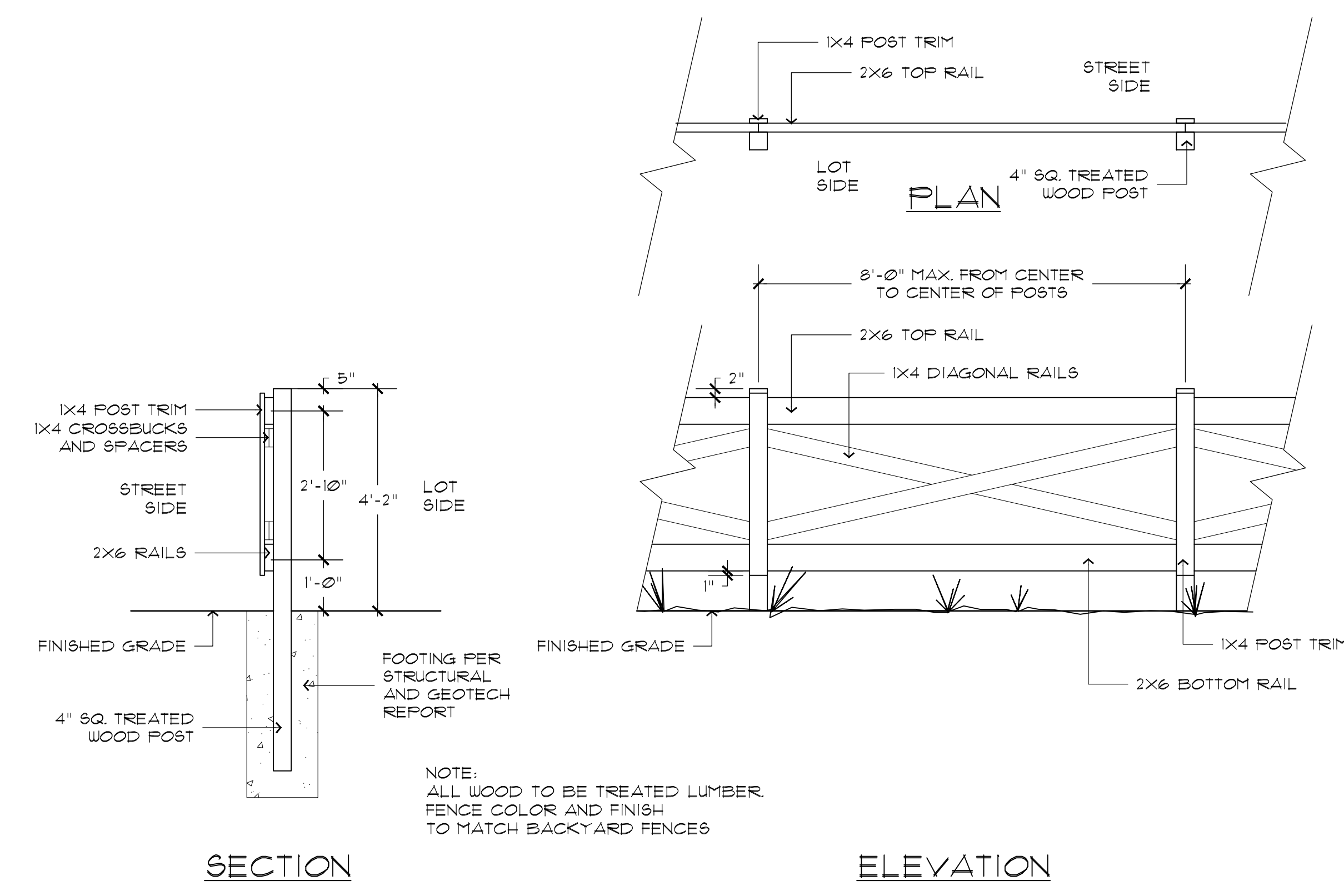
DESIGNED BY: PVD/MD
DRAWN BY: MD
CHECKED BY: MD
DATE: August 12, 2020
REVISIONS:

Cyrene at Fiddymont Ranch
DRB Submittal

L1.2

PLANT LEGEND

SYM.	BOTANICAL NAME	COMMON NAME	QTY	SIZE	WATER USAGE	HEIGHT & WIDTH
PRIMARY TREES						
	<i>Acer rubrum</i> 'Red Sunset'	Red Maple	26	1" Cal.	MED	60'x45'
	<i>Fraxinus Americana</i> 'Autumn Purple'	American Ash	35	1" Cal.	MED	80'x20'
	<i>Pyrus calleryana</i> 'Aristocrat'	Callery Pear	22	1" Cal. 2" Cal.	MED	50'x35'
	<i>Platanus acerifolia</i> 'Bloodgood'	Bloodgood London Plane Tree	29	1" Cal.	MED	100'x20'
	<i>Quercus shumardii</i>	Shumard Oak	28	1" Cal.	MED	60'x60'
	<i>Quercus suber</i>	Cork Oak	0	1" Cal.	LOW	70'x70'
	<i>Quercus virginiana</i>	Southern Live Oak	8	1" Cal. 2" Cal.	MED	80'x100'
	<i>Ulmus parvifolia</i> 'Trus Green'	Chinese Elm	37	1" Cal.	MED	50'x40'
	<i>Zelkova serrata</i> 'Village Green'	Japanese Zelkova	32	1" Cal.	MED	60'x50'
ACCENT TREES						
	<i>Arbutus marina</i>	Marina Strawberry Tree	24	1" Cal.	MED	50'x40'
	<i>Cercis occidentalis</i>	Western Redbud	101	1" Cal.	LOW	20'x20'
	<i>Fraxinus angustifolia</i> 'Raywood'	Raywood Ash	35	1" Cal.	MED	50'x30'
	<i>Lagerstroemia indica x fauriei</i> 'Tonto'	Tonto Grape Myrtle	80	2" Cal.	LOW	25'x25'
	<i>Magnolia stellata</i>	Star Magnolia	53	1" Cal.	MED	10'x12'
GRASSES/VINES						
	<i>Aristolochia californica</i>	California Pipevine	54	5 Gal.	LOW	20'x1'
	<i>Clematis ligusticifolia</i>	Old-Man's Beard	33	5 Gal.	MED	30'x1'
	<i>Euonymus fortunei radicans</i>	Wintercreeper	124	5 Gal.	MED	15'x2'
	<i>Ficus pumila</i>	Climbing Fig	62	5 Gal.	MED	15'x2'
	<i>Deschampsia caespitosa</i>	Tussock Grass	162	5 Gal.	LOW	3'x2'
	<i>Festuca californica</i>	California Fescue	144	5 Gal.	MED	1'x2'
	<i>Muhlenbergia capillaris</i> 'Regal Mist'	Muhly Grass	162	5 Gal.	LOW	4'x3'
SHRUBS						
	<i>Arbutus unedo</i> 'Compacta'	Strawberry Tree	186	5 Gal.	LOW	10'x10'
	<i>Arctostaphylos densiflora</i> 'Howard McMin'	Vine Hill manzanita	118	5 Gal.	MED	7'x10'
	<i>Carpenteria californica</i>	Bush Anemone	182	5 Gal.	LOW	10'x10'
	<i>Cistus ladanifer</i>	Gum Rockrose	163	5 Gal.	MED	5'x3'
	<i>Dodonaea viscosa</i> 'Purpurea'	Purple Hopseed Bush	286	5 Gal.	LOW	15'x15'
	<i>Mahonia aquifolium</i>	Oregon Grape	179	5 Gal.	MED	6'x5'
	<i>Rhamnus californica</i> 'Eye Case'	Coffeeberry	223	5 Gal.	LOW	15'x15'
	<i>Ribes viburnifolium</i>	Catlina Currant	281	5 Gal.	LOW	3'x2'
GROUND COVERS						
	<i>Arctostaphylos</i> 'Emerald Carpet'	Emerald Carpet Manzanita	381	1 Gal.	MED	5'
	<i>Arctostaphylos</i> 'Green Supreme'	Green Supreme Manzanita	84	1 Gal.	MED	4'
	<i>Salvia cistus</i>	Salvia cistus	63	1 Gal.	LOW	2'
	<i>Fragaria chiloensis</i>	Beach Strawberry	81	1 Gal.	MED	3'
	<i>Hypericum calycinum</i>	Aaron's Beard	119	1 Gal.	MED	4'
	<i>Mahonia repens</i>	Creeping Oregon Grape	127	1 Gal.	LOW	3'
	<i>Myoporum parvifolium</i>	Creeping Myoporum	126	1 Gal.	LOW	3'
	<i>Myrtus communis</i> 'Compacta'	Compact Myrtle	314	1 Gal.	LOW	4'
	<i>Salvia sonomensis</i>	Creeping Sage	246	1 Gal.	LOW	3'
MISCELLANEOUS						
	3/4" Decorative Bark Mulch to Match Master Development, 3" Depth in All Planting Areas (Typ)					
	Laminated 3/8" Redwood Bender Board or equal					



RAIL FENCE
SCALE: 1/2" = 1'-0"

